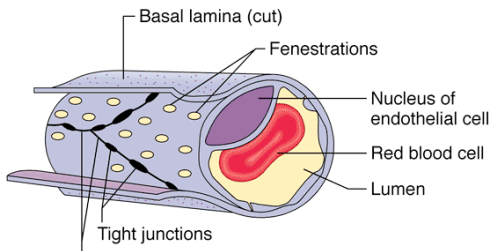


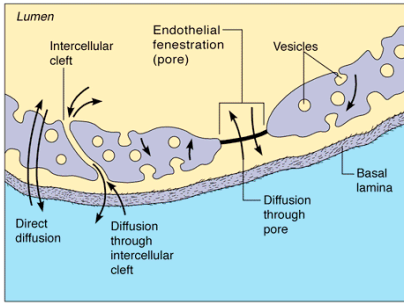
# Vessels



Intercellular clefts

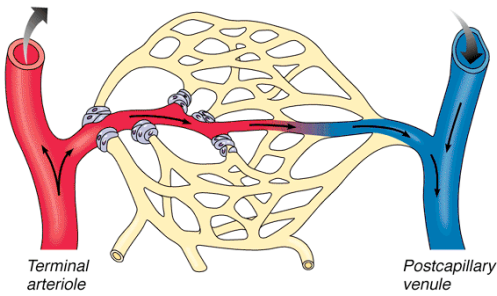
(a)

© BENJAMIN CUMMINGS



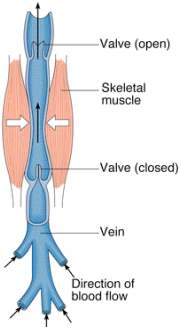
(b)

© BENJAMIN CUMMINGS

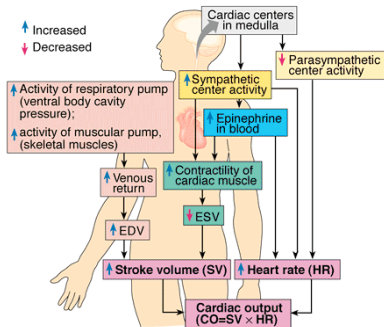


(b) Sphincters closed

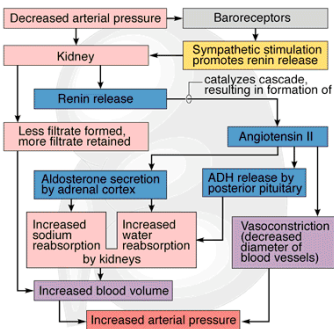
© BENJAMIN CUMMINGS



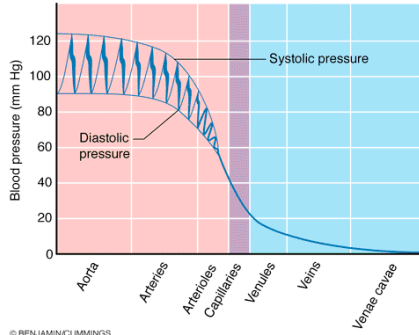
© BENJAMIN CUMMINGS



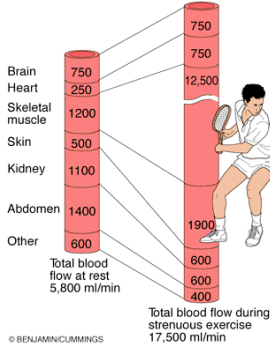
© BENJAMIN CUMMINGS



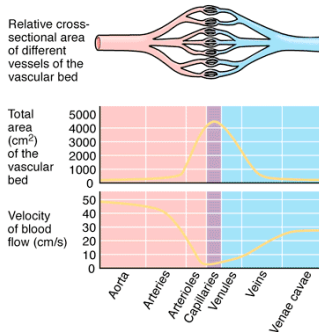
© BENJAMIN CUMMINGS



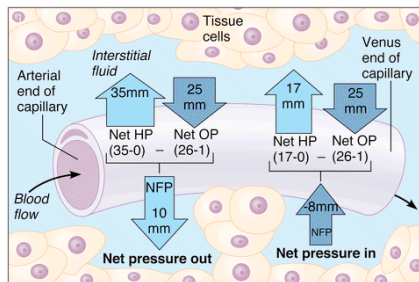
© BENJAMIN CUMMINGS



© BENJAMIN CUMMINGS

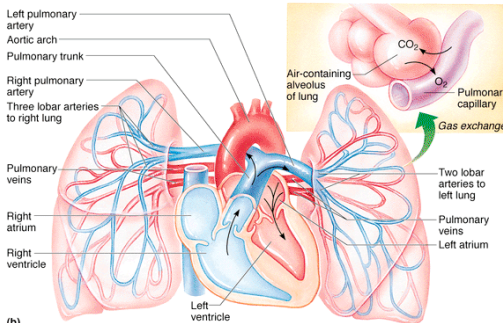


© BENJAMIN CUMMINGS



Key to pressure values:  
 $HP_c$  at arterial end = 35 mmHg  $HP_v = 0$  mmHg  $OP_{if} = 1$  mmHg  
 $HP_c$  at venous end = 17 mmHg  $OP_c = 26$  mmHg

© BENJAMIN CUMMINGS



(b) © BENJAMIN CUMMINGS