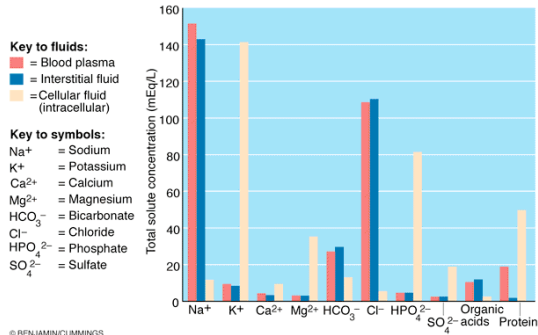


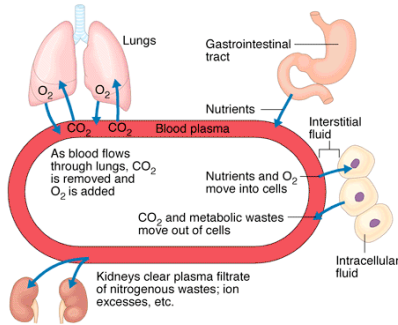
Fluid, Electrolyte, & Acid-Base Balance

Total body water volume = 40 L, 60% body weight		
Extracellular fluid volume = 15 L, 20% body weight		
Intracellular fluid volume = 25 L, 40% body weight	Interstitial fluid volume = 12 L, 80% of ECF	Plasma volume = 3 L, 20% of ECF

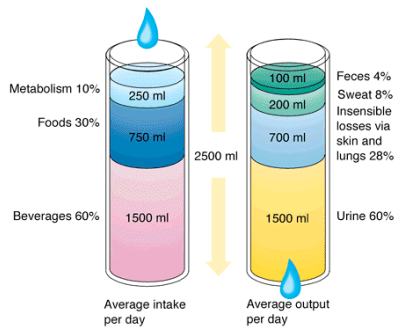
© BENJAMINCUMMINGS



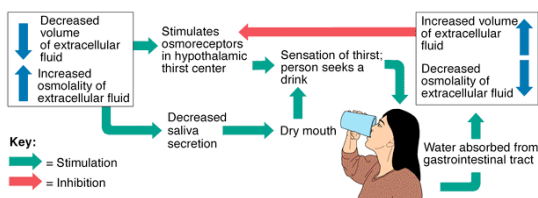
© BENJAMINCUMMINGS



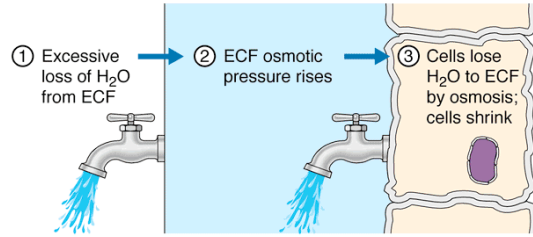
© BENJAMINCUMMINGS



© BENJAMINCUMMINGS

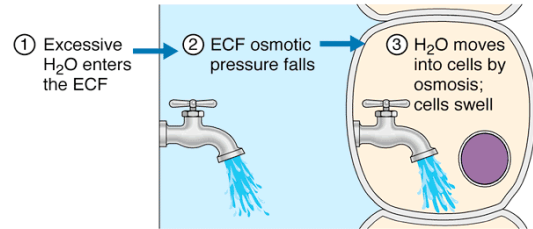


© BENJAMINCUMMINGS



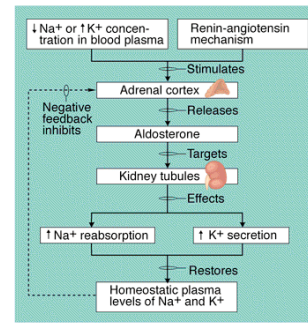
(a) Mechanism of dehydration

© BENJAMINCUMMINGS

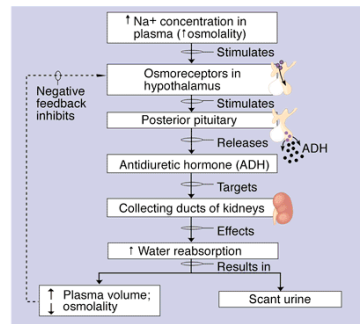


(b) Mechanism of hypotonic hydration (water intoxication)

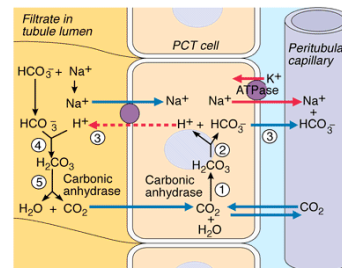
© BENJAMINCUMMINGS



© BENJAMINCUMMINGS



© BENJAMINCUMMINGS



Key:
 → = Primary active transport
 ← = Passive transport (diffusion)
 - - - → = Secondary active transport
 ● = Protein carrier

© BENJAMINCUMMINGS